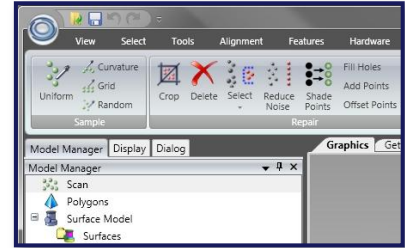


# Top 5 Reasons to Upgrade to Studio 12

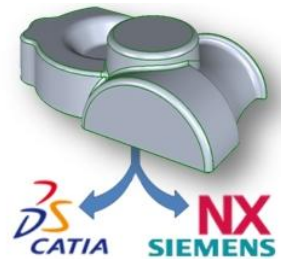
## 1 Enhanced User Experience

With its state-of-the-art Ribbon interface, Studio is even easier to learn and use. Functions are more visible and logically organized. Simple ribbon commands replace complex dialogs. Enhanced tool tips provide on the spot help in your local language. Users can customize ribbons to their particular workflows. Search tools like Command Finder help users locate the function they need.



## 2 Better Integration with Hardware and Software

With a wider array of hardware plug-ins and supported file formats for import and export, Studio is more equipped than ever to transform your data into surface and solid models. New hardware support (PTX, Surphaser), hardware integration (Creaform HandyPROBE) and software integration (CATIA, Siemens NX) make the most of your investments.



## 3 Up to 40% Faster Than Before

Due to advancements in memory management, many Studio commands operate up to 40% faster than in previous versions. With the addition of Windows 7 to the list of certified operating systems, Studio is now optimized to make the most of your hardware. Less time calculating means more time creating models and increases productivity.



## 4 Improved AutoSurface

By adding automatic error checking and an interactive mode to prompt for user input in complex areas, AutoSurface is more powerful than ever. In a matter of minutes, complex scan data is turned into watertight NURBS surfaces, ready for export as IGES or STEP. Creating accurate digital copies of physical forms is simple, with little need for special training or experience.



## 5 Streamlined Parametric Modeling Workflow

Already powerful tools for creating parametric models from scan data have been made easier and more flexible. Surfaces and region data can be edited freely, with no loss of previous work. With its ability to capture design intent from any shape, Studio is the perfect solution to create surface or solid representations of any scan. By directly integrating with all leading mechanical CAD packages, Studio is the most powerful reverse engineering tool on the market.

